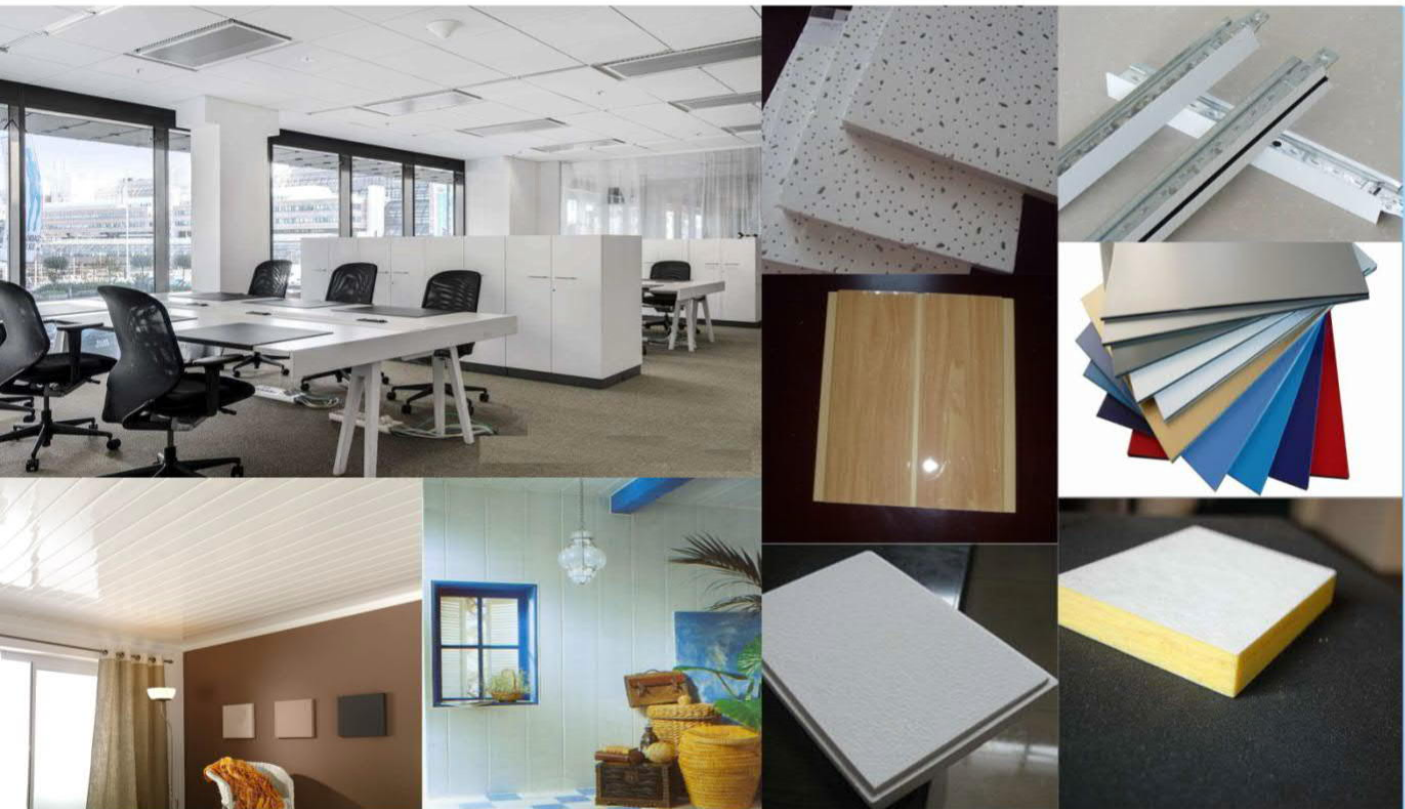


# ***CEILING&WALL PARTITION ACCESSORIES***



## TECHNICAL DATA

<b>MATERIAL:</b>	GYPSUM BOARD
<b>SURFACE:</b>	HIGH-QUALITY VINYL
<b>BACKSIDE:</b>	PET (W & W/O)
<b>EDGE:</b>	SQUARE
<b>SIZE TOLERANCE:</b>	LENGTH / WIDTH $\leq \pm 2.0\text{MM}$
	THICKNESS $\leq \pm 0.5\text{MM}$
<b>DENSITY:</b>	$\leq 780\text{KG} / \text{M}^3$
<b>MOISTURE CONTENT:</b>	$\leq 2\%$
<b>NRC:</b>	0.1-0.3
<b>HUMIDITY RESISTANT PROPERTY:</b>	UP TO 95% RELATIVE HUMIDITY
<b>LIGHT REFLECTANT PROPERTY:</b>	0.75
<b>COMBUSTION PROPERTY:</b>	ACCORDS TO GB8624-1997

## PACKING

PIECES TO BE PACKED IN KRAFT BOARD CARTON IN FOUR SIDES, AND WRAPPED BY PLASTIC FILM

gypsum ceiling tiles are made of incombustible gypsum board, PVC facing as well as aluminum foil backing. It is ideal indoor decorative materials especially used in areas requiring clean, dust free environment. The aluminum foil backing has thermal insulation properties while the PVC facing provide you various choices with different designs.

gypsum ceiling tiles are square-cut and can be easily installed with suspension t-bars system for interior ceiling. They are widely used in all commercial and institutional buildings such as offices, hospitals, schools, restaurants and shops.



# GYPSUM CEILING

## LOADING CAPACITY

SIZE (MM)	THICKNESS (MM)	PACKING (PIECES/CARTON)	LOADING CAPACITY (20'FCL)
595*595 600*600 603*603 605*605	7	8PCS/CTN	10800PCS/1350CTNS
		10PCS/CTN	10800PCS/1080CTNS
	7.5	8PCS/CTN	10080PCS/1260CTNS
		10PCS/CTN	10080PCS/1008CTNS
	8	8PCS/CTN	9280PCS/1160CTNS
	9	6PCS/CTN	8340PCS/1390CTNS
		8PCS/CTN	8352PCS/1044CTNS
	9.5	6PCS/CTN	7920PCS/1320CTNS
		8PCS/CTN	7920PCS/990CTNS

**ceiling tile has the following advantages:**

Multiple desings choices

Fire resistant

Easy cleaning

Safe and environmently healthy

Light reflection

Cost economically



# GYPSUM CEILING - PVC FACING WITH FOILBACKING



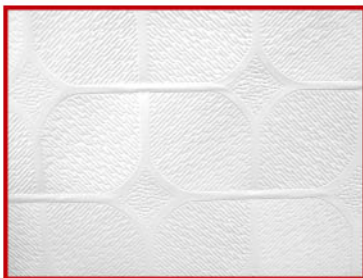
154



567



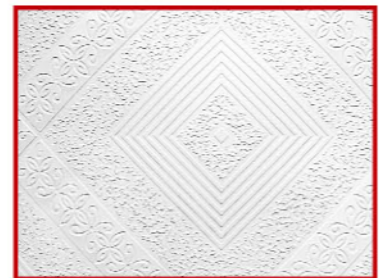
568



572



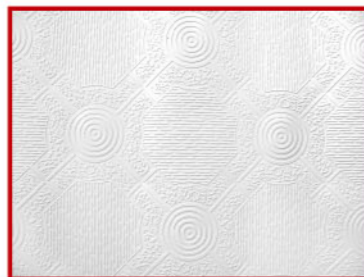
573



574



575



576



600



608



975



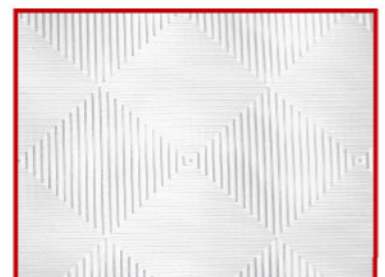
991



993



996



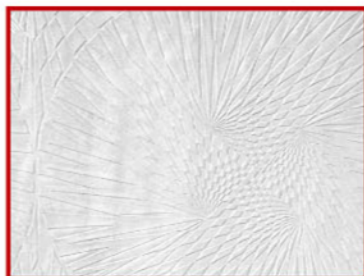
997



# GYPSUM CEILING - NEW DESIGNS



003



004



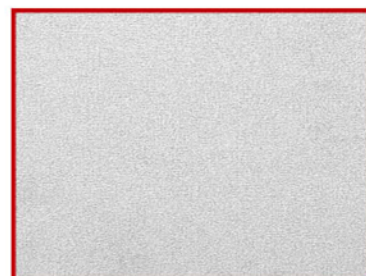
005



007



631



CCT-1



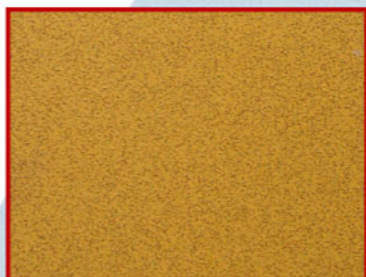
CCT-2



CCT-3



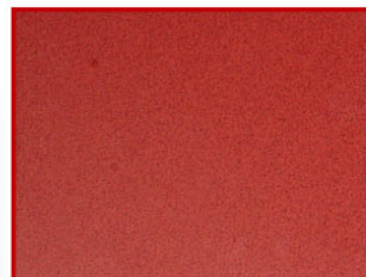
CCT-4



CCT-5



CCT-6

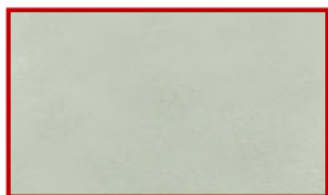


CCT-7



## TYPE:

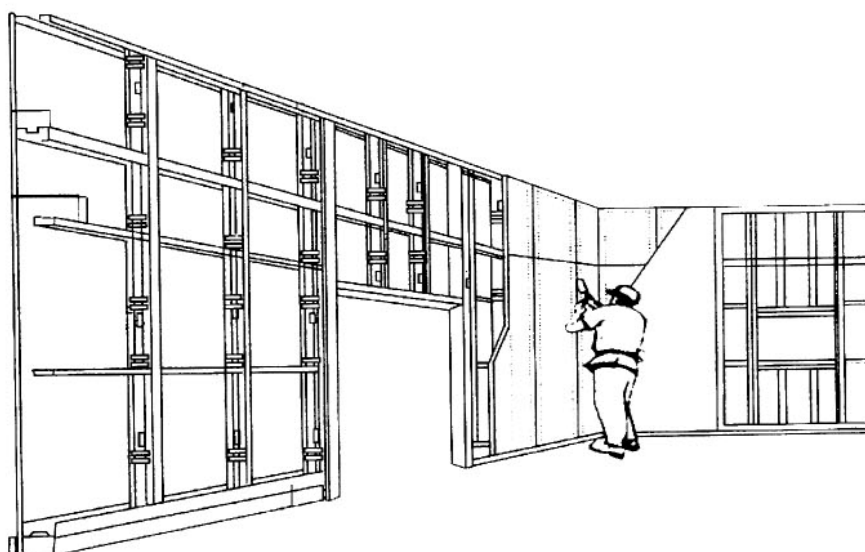
- NORMAL



- ANTI-FIRE



- WATERPROOF





# GYPSUM BOARD

## TECHNICAL DATA

<b>MATERIAL:</b>	GYPSUM BOARD
<b>SURFACE:</b>	PAPER FACED
<b>EDGE:</b>	SQUARE, TAPERED
<b>DENSITY:</b>	AS PER GB/T9775-1999
<b>BREAKING STRENGTH:</b>	AS PER GB/T9775-1999
<b>ANTI-FIRE FUNCTION:</b>	≤30 MINS AS PER GB8624 -1997
<b>COMBUSTION PERFORMANCE:</b>	NON-COMBUSTIBLE MATERIAL
<b>SIZE TOLERANCE:</b>	LENGTH / WIDTH ≤ ±2.0MM
<b>MOISTURE CONTENT:</b>	≤2%
<b>HEAT COEFFICIENT:</b>	0.16 - 0.18

## LOADING CAPACITY

SIZE (MM)	THICKNESS (MM)	PACKING (PIECES/CARTON)	LOADING CAPACITY (20'FCL)
1200*2400  1220*2440	9	PIECES	940PCS
	9.5	IN	900PCS
	12	CONTAINER	700PCS
	12.5		690PCS

MFC products are with outstanding advantages, such as fire-proofing, sound absorption, heat insulation, sag resistance, easy fixing and replacement, various beautiful textures, pollution free, etc. All these features make it possible to decorate a refined surrounding of hotel lobbies, entrance halls, apartments, auditoriums and so on.

Technical Data

PROPERTIES	TEXTURE	MA01/MA02/MA03/MA04/MP01/MP02/MP03 /MF01/MF02/MS01/MS02
MATERIAL		Mineral Wool
Density		240-280KGS/M <sup>3</sup>
Surface Finish		Acrylic-Coating
NRC		≥0.50
Fire Resist/Flamespread		Class A (GB8625-88 stipulation)
Light Reflect		0.70-0.80
Sagging Resistance Properties		Warranty against visible sag
Humidity Resistance		≥85% relative humidity



Loading Capacity

SIZE	THICKNESS (mm)	QUANTITY (M <sup>2</sup> /40HQ)	THICKNESS (mm)	QUANTITY (M <sup>2</sup> /40HQ)
2'×2';2'×4';595×595mm;595×1195mm	12	5400	15	4320
2'×2';2'×4';595×595mm;595×1195mm	13	4968	18	3301
2'×2';2'×4';595×595mm;595×1195mm	14	4500		

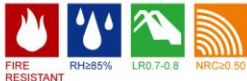
Loading Port: Tianjin China

Key Attributes

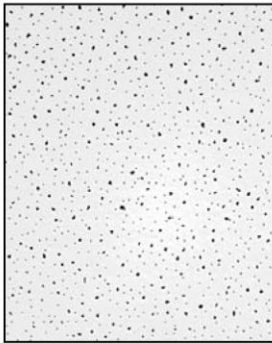
- High humidity resistance properties
- Excellent light reflectance and durability
- Zero Release of CH<sub>2</sub>O
- No content of asbestos
- Economical

Typical Applications:

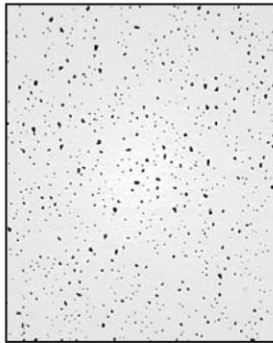
- Lobbies
- Office and conference rooms
- Corridors
- Department stores
- Auditoriums



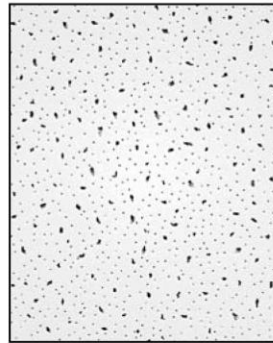
## Main Textures



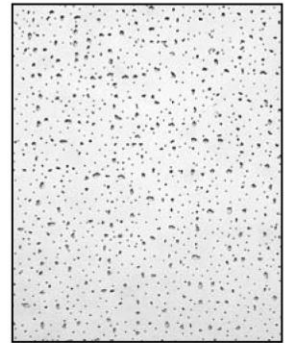
TEXTURE—MA01



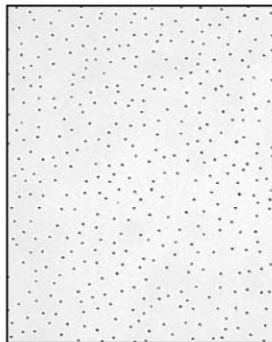
TEXTURE—MA02



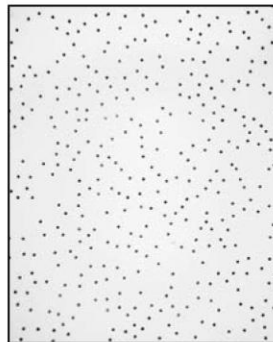
TEXTURE—MA03



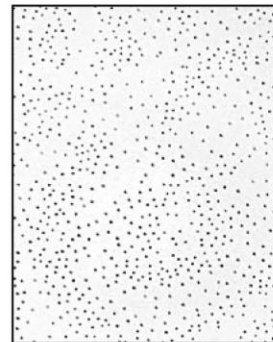
TEXTURE—MA04



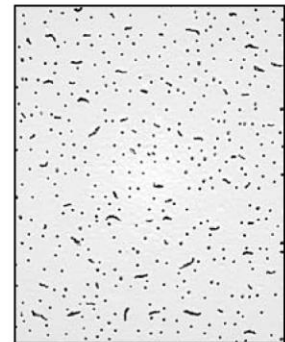
TEXTURE—MP01



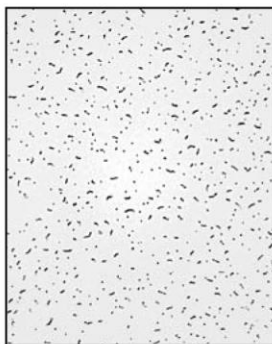
TEXTURE—MP02



TEXTURE—MP03



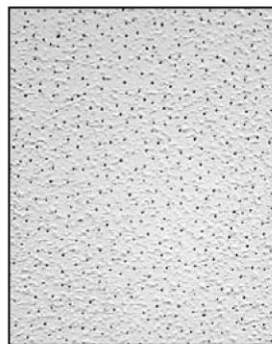
TEXTURE—MF01



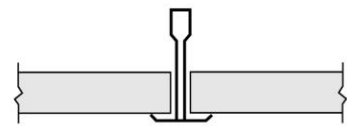
TEXTURE—MF02



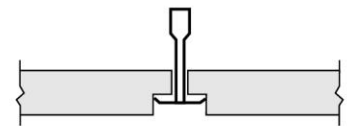
TEXTURE—MS01



TEXTURE—MS02



Square

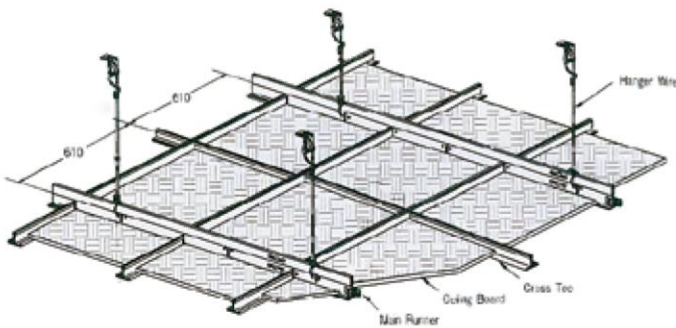


Tegular



## • Instructions for Installation

- When fixing the mineral fiber ceiling panels, please obey the design construction of the products. Please be assured that the firmness and the planes of joint.
- The environment of installing or using should provide a relative humidity of not more than 80%.
- You should firstly complete all the wet projects inside, and then start to set up the mineral fiber ceiling.
- Generally speaking, if you need load-bearing tiles, use heavy T-grid please, further more, you'd better separately design and fix the big lamps or other heavy objects.
- Put on clean gloves when working, so as to keep the panels clean and tidy.
- After finishing installation, pay attention to ventilate the room and close the doors or windows when raining.



## • Certificate



CE CERTIFICATE



SONCAP CERTIFICATE



# ACOUSTIC™

## NRC0.85 Fiberglass Acoustic Ceiling Tiles

### Technical Data sheet

#### Description.

fiberglass acoustic ceiling tiles using glassfiber fabric as the backing basement, providing the countless design and shape, four edge style and various level of colour shape infinite creativity. our fiberglass ceiling tiles feature the ideal combination of both sound absorption (NRC) and sound blocking (CAC), giving you complete noise control and design flexibility for every space. DEGO Acoustics ceiling tiles are rated GOOD, BETTER, BEST so you can easily choose the ceiling right for your space.

#### Benefits.

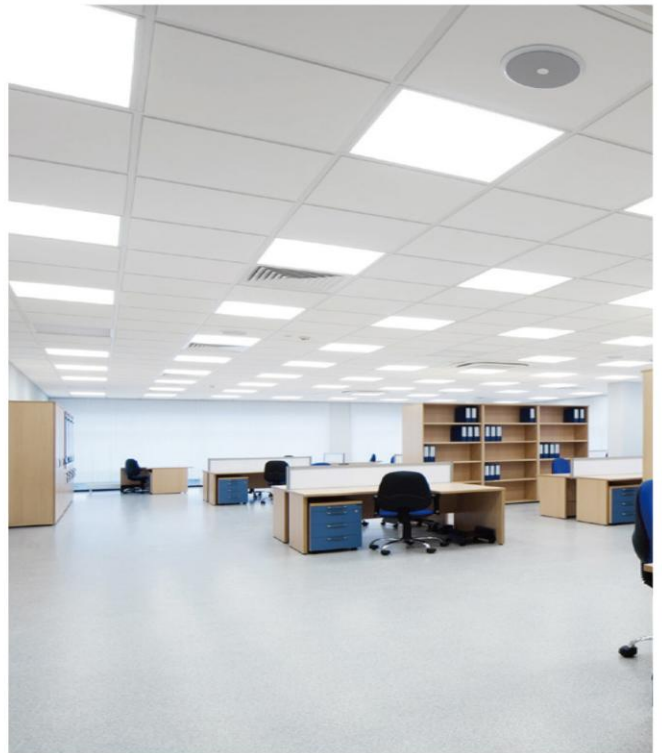
- Elegant smooth white surface, Nondirectional surface for excellent durability and superior.
- Optimal design freedom thanks to a large selection of edges (lay-in, tegular and concealed)
- light reflectance (reduces lighting and energy costs by up to 18%)
- High sound absorption (NRC = 0.85)
- High fire performance, A2
- Humidity-resistant (RH99) performance
- 15-year with warranty

### APPLICAIONS AREAS

- Open Office
- classroom
- corrido
- meeting room
- Retail/Shop
- waiting room
- School
- Healthcare



**BLACK LR4%**



**white LR85%**

## NRC0.85 Fiberglass Acoustic Ceiling Tiles



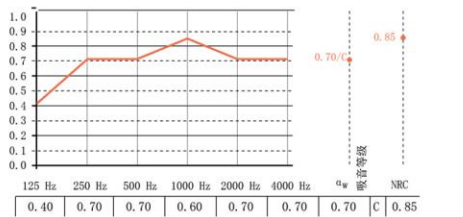
COAD: 606015A#500

### fire performance

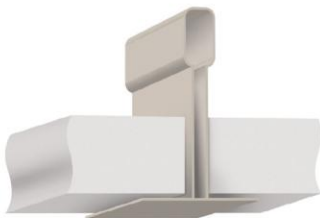
A2  
Fireproof

### absorption

- NRC=0.85
- $D_n, c, w=16\text{dB}$
- $D_n, c, w=33\text{dB}$



### INSTALL



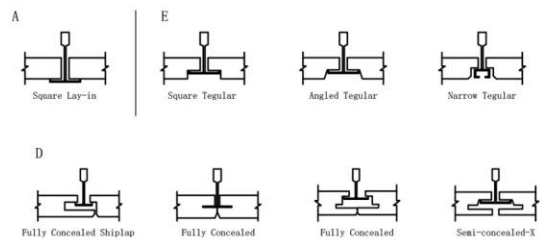
### PHYSICAL DATA

- Materials:  $\geq 100\text{g}$  high density Fiberglass
- Surface: Owens acoustically transparent membrane with factory applied acrylic latex paint
- Black: Acoustic fiberglass cloth  $\geq 45\text{g}$
- Colour: white/black
- Edge type: lay-in, tegular and concealed
- Thickness: 15/20/25/30/40/50
- Edge finishing: paint treatment provide fully encapsulated

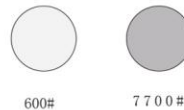
### SIZE

- 600mm\*600mmmm
- 600mm\*1200mmmm

### EDGE DESIGN



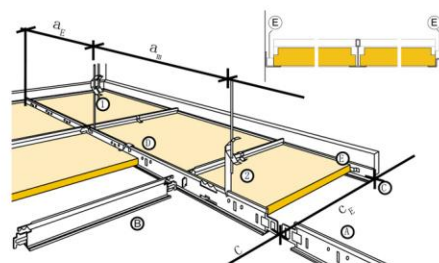
### Color s



### SIZES

EDGE	SIZES (mm)
A15	600 x 600 x15 600 x 1200 x15
A24	600 x 600 x 15 600 x 1200 x15
E24	600 x 600 x 20 600 x 1200 x20
X	600 x 600 x 22 600 x 1200 x 22

\* Actual size 595X595mm,595X1195mm

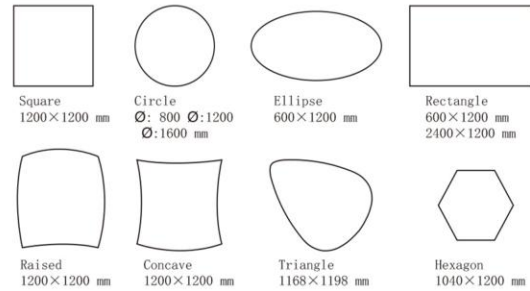


## Independent suspension

### Cloud™ NRC 0.85 Edge Wrapped Floating Acoustic Panel



#### Geometry



#### Product Description

- Material: fiberglass wool & stone wool.
- Surface: colorful white.
- back: Glass fiber mat.
- Edge: Square.

#### Sizes

1200 x 1200 x 50 mm / 30/40  
1200 x 2400 x 50 mm / 30/40

- fire rating: a2-s1,d0.
- anti-luminosity: 74%
- sound absorption performance: NRC0.85.
- weight KG/m2:1-1.5.
- moisture proof and depression ::RH99.

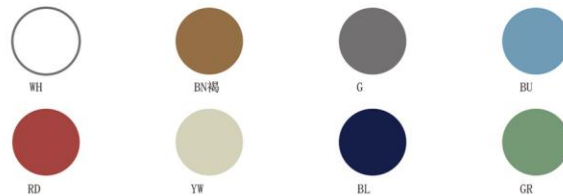
#### Application

- open office space.
- Cinema,
- kindergarten,
- exhibition .

#### Gorgeous color

The sound yuete independently hangs the molding board with the pastel color, creating a warm atmosphere.

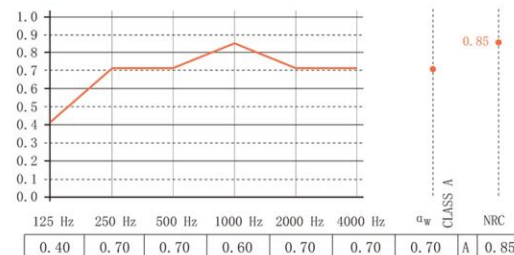
Wai. Perfect matte texture, by combining different tones or by creating colors, In the same field, shape the individual space.



#### Top acoustic effect

It can significantly degrade background noise and reverberation time. High speech intelligibility, the glass panel enhances private space comfort, top privacy and sound.

Learning comfort benefits from the sound insulation performance and high level of sound absorption performance between outstanding rooms.



## Install



#### "Spiral spring fixed hanger" kit.

##### Simple suspension

Innovative "spiral spring fixed hanger" kit installation. Simple components can work effectively. Install the anchor point on the panel. The helical spring anchors are simply mounted clockwise to the sound board.

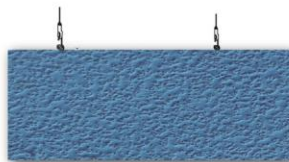
Inside. This is a quick and efficient way to install the hangers without using the installation tool. Each helical spring anchor is fitted with a 2 m suspension, adjuster and fixed expansion bolts.



# EXsound™ NRC 0.85



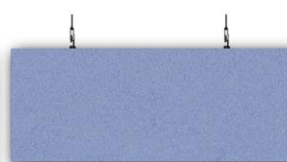
60120050AW600



60120050A#700



60120050A#700Y



60120050A#700R



60120050A#700B

## Product description

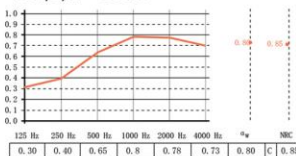
- Material: 100K Fiberglass
- Surface: smooth paint,
- Back :factory applied acrylic latex paint,
- EDGE: Curing closure

## Size

- 1200mm x 600mm x 40/50mm
- 2400mm x 600mm x 40/50mm
- 2400mm x 300mm x 40/50mm
- Customizable

## Sound absorption:

- NRC=0.85
- Dn,c,w=16dB
- Dn,c,w=33dB



## Colour:

Exsound:(White AS180) (Mid Grey RAL7040) (Light Grey RAL7030) (Grey White RAL9002) (Wood Wool Print) (Plaster Print) (Wood Print over RAL1014 Oak) (Wood Print over RAL1013 Blond) (Wood Print over RAL8019 Walnut) (Zinc Yellow RAL1018) (Ivory RAL1014) (Graphite Black RAL9011) (Traffic Red RAL3020) (Orient Red RAL3031) (Traffic Orange RAL2009) (Traffic Green RAL6032) (Aqua RAL6027) or (1963 White Glass Woven Fibre Fabric ), other finishes to order.

## Environmental impact:

Core from 80% recycled local waste glass,  
Low VOC <0.002 Mg/M<sup>2</sup>/hr per ASTM D5116

## Fire Reaction: A2-s0d0 CN

## Humidity:

Max 99% R/H at 45°C.

## Light reflectance:

LR75% White

## Maintenance:

Clean with vacuum, soft brush or damp cloth. Re-surfacing of panels available, consult Asona.

## Warranty:

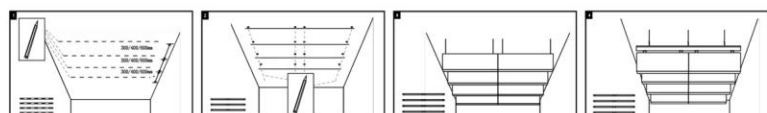
15 years

## Weight:

- 5.4kgs/m<sup>2</sup> (Items1206040 )
- 6.6kgs/m<sup>2</sup> (Items1206050)

## Install

using manufacturers approved fixings. ct fix panels to the structure on installation





# EXSOUND™

## FIBERGLASS ACOUSTICS CEILING TILE

### High performance sound absorption

#### Independent suspension cloud panels

It has a free and open design and a new definition of space. Combine lively surface shape with gorgeous color group. Together, give the hall a new feeling. A variety of geometric design ceiling to provide you with creative sound absorption solutions, resulting in acoustic comfort. and High speech clarity, beautiful and unframed innovative sound absorption independent ceiling, elegant white smooth surface, full play design freedom. Degrees. Easy to install, especially suitable for hanging ceiling.

#### FEATURES & BENEFITS

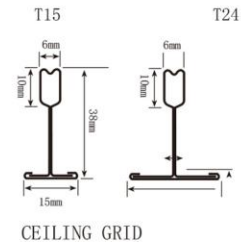
- Elegant smooth white surface, Nondirectional surface for excellent durability and superior
- Optimal design freedom thanks to a large selection of edges (lay-in, regular and concealed)
- light reflectance (reduces lighting and energy costs by up to 18%)
- High sound absorption (NRC = 0.85)
- High fire performance, A
- Humidity-resistant (RH99) performance
- 15-year with warranty



ACOUSTIC fiberglass  
suspended ceiling  
Offers a variety of edge options  
Helps you achieve the ceiling effect you want.

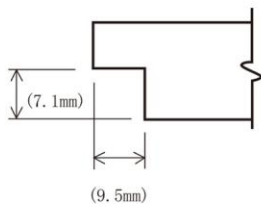
A24

T24/T15GRID  
ALL TRIM EDGES (T)  
9/16" and 15/16" Grid



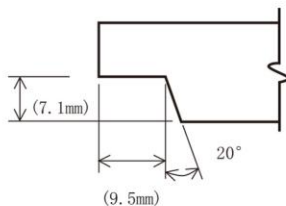
E15

Square Tegular Narrow  
ALL REVEAL EDGES (RE)  
15/16" Grid



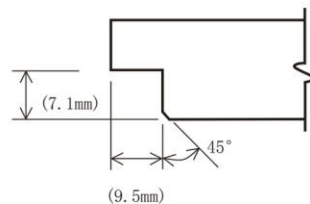
E15

Angled Tegular  
ALL REVEAL EDGES (RE)  
15/16" Grid



E15

Bevel Tegular  
ALL REVEAL EDGES (RE)  
15/16" Grid



DA24

Shiplap  
ALL OPEN TYPE EDGES (SC)  
15/16" Grid



DB24

Concealed - C  
ALL CLOSE TYPE EDGES (SC)  
15/16" Grid



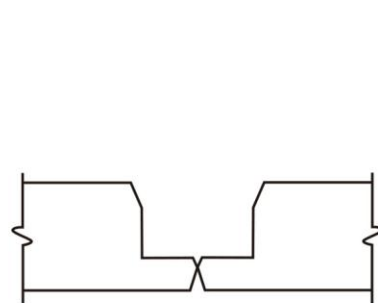
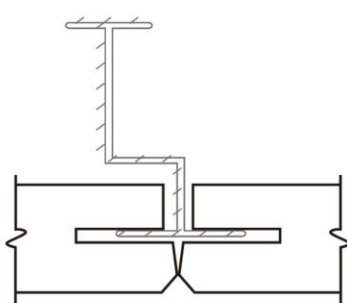
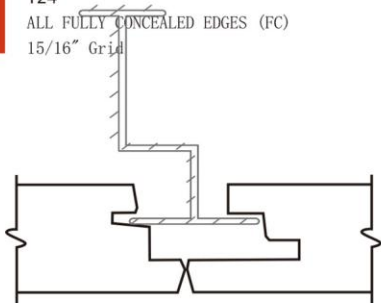
DX24

Concealed - X  
ALL CLOSE TYPE EDGES (SC)  
15/16" Grid



FC

T24  
ALL FULLY CONCEALED EDGES (FC)  
15/16" Grid



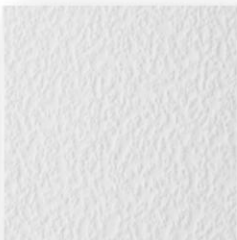
Fibergalss Ceiling Panels

White basic design

100#



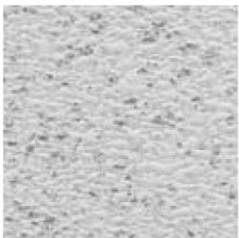
600#



700#



500#



900#



800#



Low reflective surface

101#



102#



700BL#



Decorative design sectionS

700RE#



700YE#



700BU#



Impact resistance





**CEILING PRO™ INYUETER™ color**  
ROCKWOOL/FIBERGLASS ACOUSTIC CEILING Tile



Items: 606015A#100B LR4%



Items: 606015A-#600B LR8%



**BENEFITS**

- Elegant smooth white surface  
Nondirectional surface for excel
- High sound absorption
- High fire performance, A2
- Plus(RH99)performance
- light reflectance
- Indoor aesthetics
- Free design





**SOUND ABSORPTION**

- NRC=0.85
- Dn,c,w=16dB
- Dn,c,w=33dB

**Physical Data**

MATERIAL : rockwool panels  
SURFACE FINISH:with factory applied acrylic latex paint,  
COLOR:White  
EDGE: paint treatment provide fully encapsulated

**Sizes**

EDGE	SIZS (mm)	GRID
 A15	600 x 600 x 15	T15
 A24	600 x 600 x 15	T24
 E24	600 x 600 x 20	T24
 X	600 x 600 x 22	T24

**EDGE DETAILS**







### FEATURES

- Nondirectional surface for excellent durability and superior.
- Outstanding acoustical performance, both Articulation Class B and NRC (0.80-0.85)
- white finish has perfect light diffusion (+82%) ,  
light reflectance (reduces lighting and energy costs by up to 18%)
- Sag and mold-resistant
- Tissue backing and edge paint treatment provide fully encapsulated rockwool panels

### WHITE DESIGN

- #100 white smooth surface, excellent acoustic performance and more Species edge structure for general space.
- # 600 white elegant surface, a variety of edge structure and size, suitable for office, integrated space.
- # 700 white fine surfaces, outstanding acoustics, superior sound absorption energy, especially for the area easier to produce echo.

### APPLICATIONS

---

- |                                 |                                      |                                       |
|---------------------------------|--------------------------------------|---------------------------------------|
| - Open Plan Offices             | - Private Offices<br>(walls-to-deck) | - Doctor's Offices<br>(walls-to-deck) |
| - Classrooms<br>(walls-to-deck) | - Patient Rooms<br>(walls-to-deck)   | - Libraries                           |
| - Conference Rooms              |                                      |                                       |

Laminated Series (25cm) Cross section diagram



HM-025



HM-026



HM-027



HM-028

Laminated Series (25cm) Cross section diagram



HM-029



HM-030



HM-031



HM-032

Laminated Series (25cm) Cross section diagram



HM-041



HM-042



HM-043



HM-044

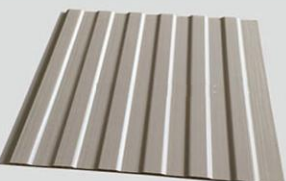
Laminated Series (25cm) Cross section diagram



HM-045



HM-046



HM-047



HM-048





HM-247



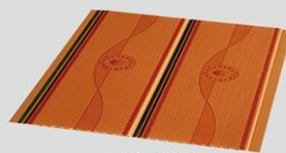
HM-248



HM-249



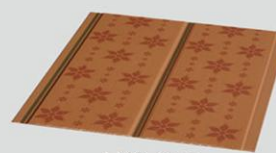
HM-250



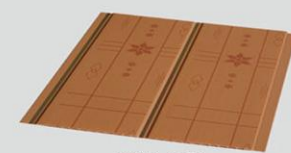
HM-251



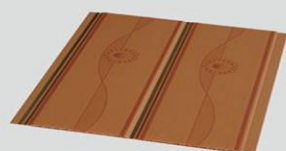
HM-252



HM-253



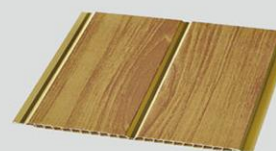
HM-254



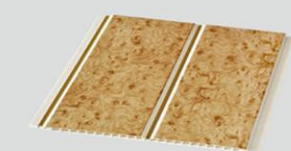
HM-255



HM-256



HM-257



HM-258



HM-259



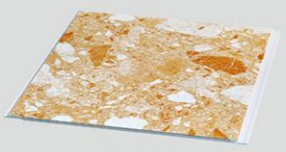
HM-260



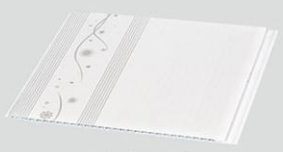
HM-261



HM-262



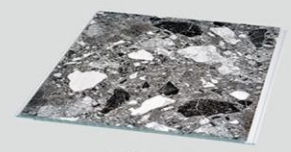
HM-263



HM-264



HM-265



HM-266



HM-267



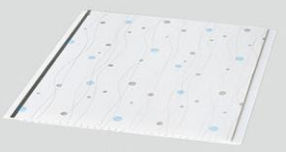
HM-268



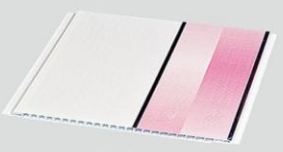
HM-269



HM-270



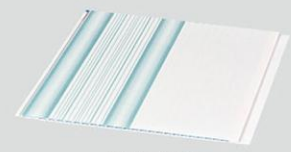
HM-271



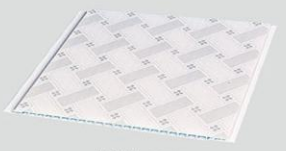
HM-272



HM-273



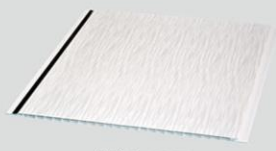
HM-274



HM-275



HM-276



HM-277

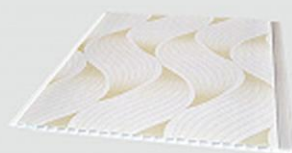


HM-278





HM-183



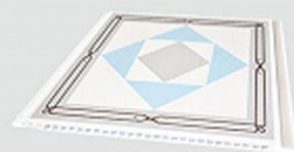
HM-184



HM-185



HM-186



HM-187



HM-188



HM-189



HM-190



HM-191



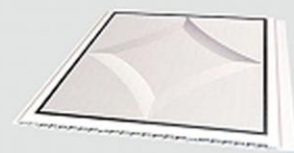
HM-192



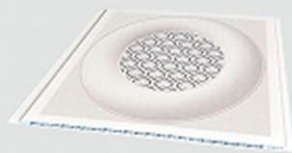
HM-193



HM-194



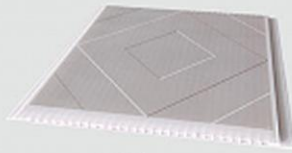
HM-195



HM-196



HM-197



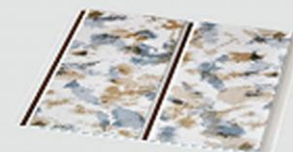
HM-198



HM-215



HM-216



HM-217



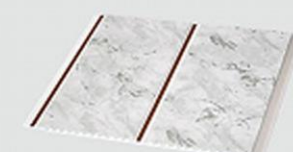
HM-218



HM-219



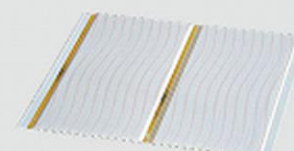
HM-220



HM-221



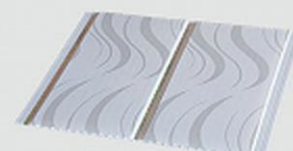
HM-222



HM-223



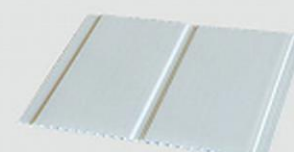
HM-224



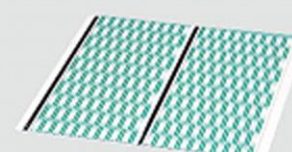
HM-225



HM-226



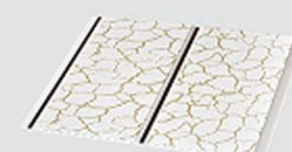
HM-227



HM-228

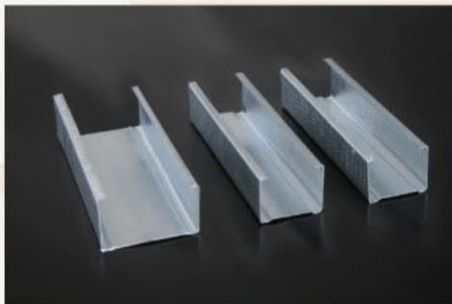
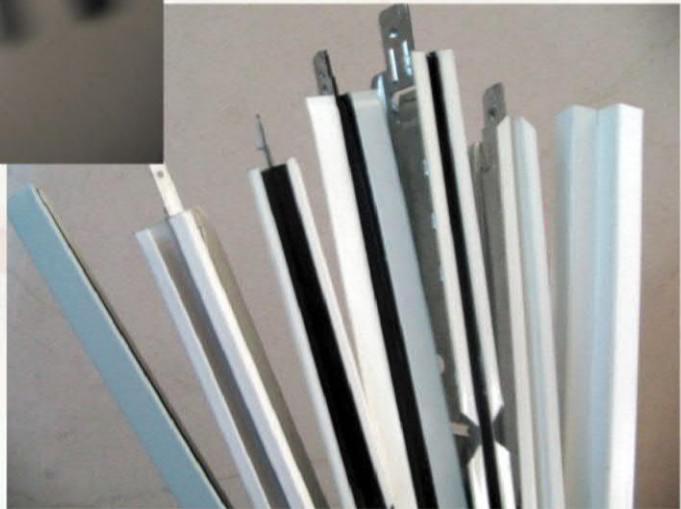
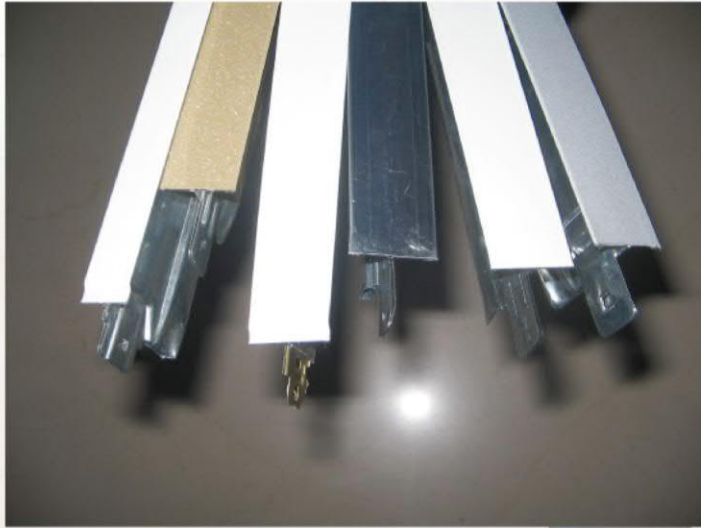


HM-229

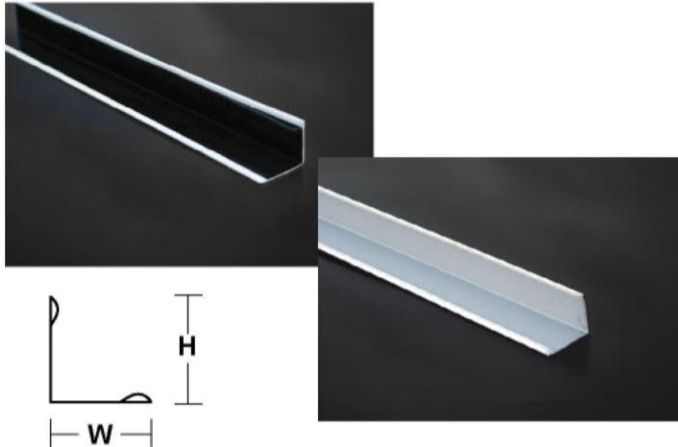


HM-230

## Main Products:



## Plane System



### ITEM:

NPT38, NPT32 (White)  
CNPT38, CNPT32 (Chrome)  
SNPT38, SNPT32 (Silver)  
CTNPT38, CTNPT32 (Golden)

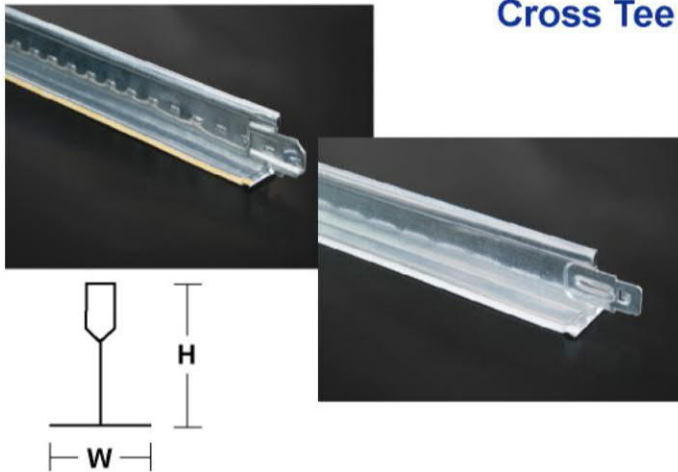
### Wall Angle

**Size:** (Height × Width × Length)

24 × 24 × 3000mm

20 × 20 × 3000mm

**Thickness:** 0.3mm, 0.4mm



### Cross Tee

**Size:** (Height × Width × Length)

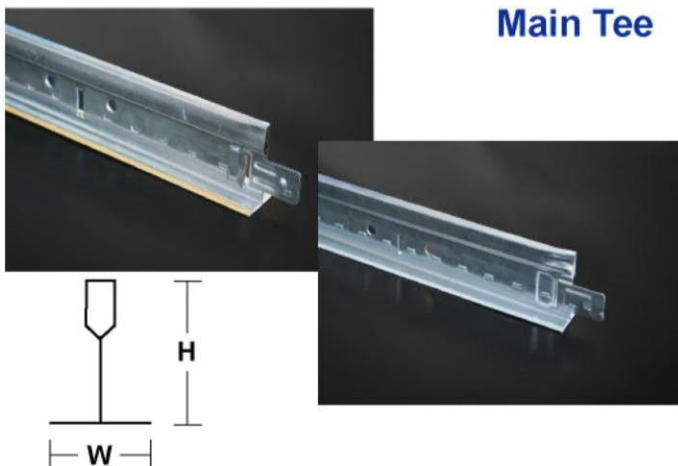
27 × 24 × 1200mm

27 × 24 × 1220mm

27 × 24 × 600mm

27 × 24 × 610mm

**Thickness:** 0.26mm, 0.3mm



### Main Tee

**Size:** (Height × Width × Length)

38 × 24 × 3600mm

38 × 24 × 3660mm

38 × 24 × 3750mm

32 × 24 × 3600mm

32 × 24 × 3660mm

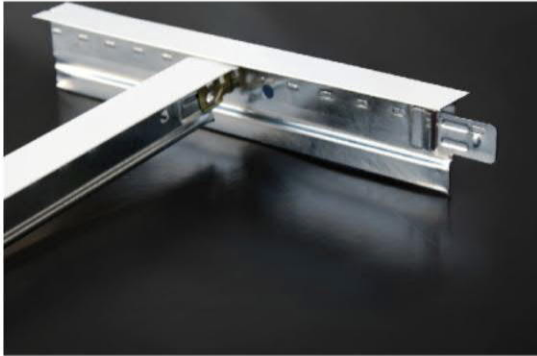
32 × 24 × 3750mm

**thickness:**

0.26mm, 0.30mm, 0.35mm, 0.40mm



# Alloy End Grid



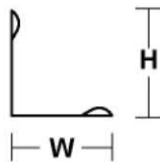
## ITEM:

ANPT38, ANPT32

Alloy end provides added corrosion resistance.  
Global compatibility and availability.



## Wall Angle



**Size:** (Height × Width × Length)

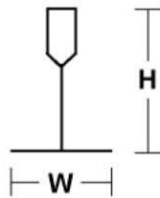
24 × 24 × 3000mm

20 × 20 × 3000mm

**Thickness:** 0.3mm, 0.4mm



## Cross Tee



**Size:** (Height × Width × Length)

27 × 24 × 1200mm

27 × 24 × 1220mm

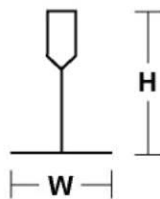
27 × 24 × 600mm

27 × 24 × 610mm

**Thickness:** 0.26mm, 0.3mm



## Main Tee



**Size:** (Height × Width × Length)

38 × 24 × 3600mm

38 × 24 × 3660mm

38 × 24 × 3750mm

32 × 24 × 3600mm

32 × 24 × 3660mm

32 × 24 × 3750mm

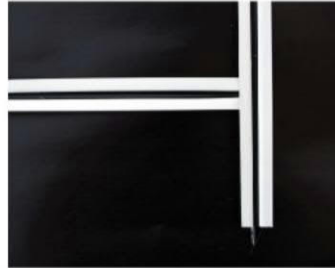
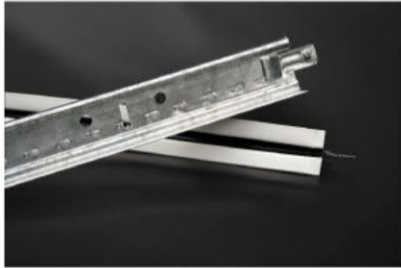
**thickness:**

0.26mm, 0.30mm, 0.35mm, 0.40mm

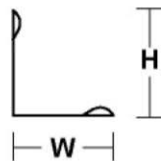
# Groove System

## ITEM:

NGBT30, SGBT32



## Wall Angle



**Size:** (Height x Width x Length)

20 x 14 x 3000mm

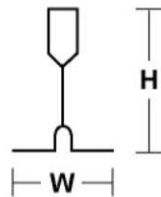
20 x 14.5 x 3000mm

24 x 24 x 3000mm

**Thickness:** 0.3mm, 0.4mm



## Cross Tee



**Size:** (Height x Width x Length)

32 x 14 x 1200mm    32 x 24 x 610mm

32 x 14 x 1220mm    32 x 14.5 x 1200mm

32 x 14 x 600mm    32 x 14.5 x 1220mm

32 x 14 x 610mm    32 x 14.5 x 600mm

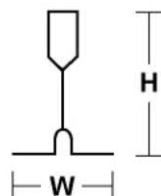
30 x 24 x 1200mm    32 x 14.5 x 610mm

30 x 24 x 600mm

**Thickness:** 0.26mm, 0.3mm



## Main Tee



**Size:** (Height x Width x Length)

32 x 14 x 3600

32 x 14 x 3660

32 x 14.5 x 3600

32 x 14.5 x 3660

30 x 24 x 3600

30 x 24 x 3660

**Thickness:** 0.26mm, 0.3mm

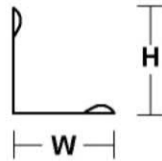
# Exposed System

## ITEM:

EGBT32, EGBT38, EGBT42



## Wall Angle



**Size:** (Height x Width x Length)

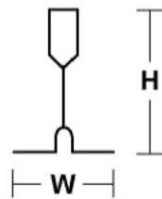
20 x 16 x 3000mm

20 x 16 x 3600mm

**Thickness:** 0.3mm, 0.4mm



## Cross Tee



**Size:** (Height x Width x Length)

42 x 15 x 1200mm      38 x 16 x 600mm

42 x 15 x 1220mm      38 x 16 x 610mm

42 x 15 x 600mm      32 x 16 x 1200mm

42 x 15 x 610mm      32 x 16 x 1220mm

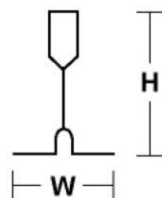
38 x 16 x 1200mm      32 x 16 x 600mm

38 x 16 x 1220mm      32 x 16 x 610mm

**Thickness:** 0.3mm, 0.4mm



## Main Tee



**Size:** (Height x Width x Length)

42 x 15 x 3600mm

42 x 15 x 3660mm

38 x 16 x 3600mm

38 x 16 x 3660mm

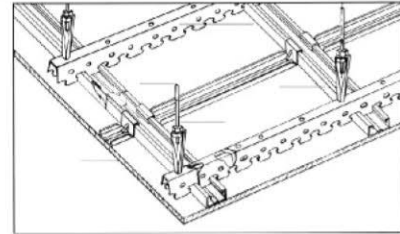
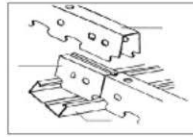
32 x 16 x 3600mm

32 x 16 x 3660mm

**Thickness:** 0.3mm, 0.4mm



# Concealed grid



## SPECIFICATION

DESCRIPTION		COMPONENT	DIMENSION	THICKNESS (MM)
SUSPENSION GRID	CLIP STYLE GRID	MAIN TEE	38 × 20	0.7, 0.8
			30 × 20	0.6, 0.8
		CROSS TEE	49 × 17	0.4, 0.5
	C SHAPE GRID	MAIN TEE	50 × 13	0.7 TO 1.5
			38 × 11	0.5 TO 1.2
		CROSS TEE	50 × 17	0.4, 0.5

